



Motivating Emotions Scientifically Associated with The Choice of Deity

Author: Sukran Karatas, Freelance Researcher

Selection and peer review under responsibility of Prof. Dr. Fahrettin Sadikoglu, Near East University.
©2014 Academic World Education & Research Center. All rights reserved.

Abstract

Humans are the only conscious beings that have the ability to motivate their own emotions, however, the authentication of these individual and universal emotional motivations proves to be rather problematic. There is no doubt that genetics, traditions, cultural and geographical environments, and many more factors can play important roles in motivating emotions but the main factor is the choice of deity.

The choosers consciously and voluntarily give full authority to the chosen deity to customise the basic rules and regulations of their life that motivate emotional and social behaviours. Therefore, the chosen deity has to provide precise power and knowledge of codes and coordination for the choosers to manage the constant life giving but emotionally variable energy flow, within self, body, soul and spirit between self and the chosen deity and with the other conscious or autonomous creations. The important question is, 'How can the chosen deity be authenticated to motivate the individual emotions and outline the universal principles under a total freedom, equality and justice among human beings?'

Therefore, the book '*Deity and Freedom, Equality, Justice in History, Philosophy and Science (2013)*' concentrates on how to choose the authentic Deity, using the existing '*wave end energy behaviours*' to demonstrate the emotional energy flow co-ordinating their behaviour between the different mediums. The main aim is to establish valid measurable link between reason, emotion and belief to encourage developing new combined scientific methods of research in the future, without which the world of science cannot be considered complete.

Keywords: emotion,motivation,behaviour,deity,science,freedom,equality,justice,harmony,authentic;

Creations in every dimension are separately and collectively nourished and managed by the unique energy source that is coming from the Creator. Universe, as a whole, contains 72% of Dark Energy, 23% of dark matter, around 4.5% of intergalactic gas and stars as atomic existence that includes human beings.¹ Every individual creation has its own built-in intellect through which they are able to act or react to coordinate and cooperate automatically within self, with others and with the actual source of power and intellect, the Deity. Despite the very small part that human beings occupy within the creations, they have to motivate their emotional behaviours voluntarily alongside the autonomous system that involves every dimension and every aspect of life. These cover spirit, body and soul integrations; universal interrelations with the other creations, conscious or autonomous beings and with the actual power behind the Big Bang.

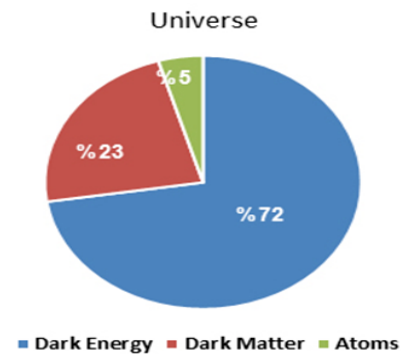


Figure 1: percentages of cosmic energy.

Life in the universe relies on time, space and action based on generating and degenerating intervals. Therefore, it is necessary to have a precisely tuned coordination network for working in perfect harmony. Scientifically, the level of their interrelation depends on their density, the number and the combination of atoms in their structure and the gravity ratio within self, between each other and with the main source itself. As much so that they become a part of a perfect autonomous energy network in which no individual or universal interruption takes place apart from the conscious human actions that need to be motivated voluntarily to work in harmony within self and with the rest of the creations.

Humans are the only beings that have conscious ability for acting upon voluntary choices alongside the automatically combined bodies. They have to use this ability to choose their own deity first, to classify and clarify the necessary principles of life for attaining a perfect soul and body combination, specifying self-identity and evaluating social relations. Even though, emotions are partly influenced by individual genetics, cultural, social environmental and geographical influences; unlike the autonomous actions, they are, in fact, voluntarily or habitually controllable. Therefore, motivating human emotions is one of the most important as well as the most chaotic and problematic issue that involves almost in every field of life. Yet again, it raises an important question that 'How can human beings obtain the authentic knowledge that is necessary to cooperate and coordinate their voluntary actions efficiently with the autonomous systems, which are within self, with others and with the Source, without disturbing the existing balance of freedom, equality and justice among all?

Choice of deity is a birth given right and individuals are totally free to choose or not to choose the same source as the deity that the autonomous beings automatically obey. Nonetheless, choice has to be done in one way or the other and the chosen authority 'deity' or 'deities', if more than one, defines the basic rules and regulations of the chooser's life. So, it is essential to choose a deity that is scientifically justifiable for the most perfect healthy and happy life. Therefore, we will look into the 'wave end boundary behaviour between different mediums' to be able to give scientific examples for choosing the most authentic deity. However, a brief history, philosophy and revelation related background knowledge is first required for understanding the analysis.

¹ Borrow, John D. (1994). The Origin of the Universe: Science Master Series.

Historical evidence indicates that human beings always had some kind of awareness about the existence of the Creator and His overall power over the creations, but somehow, some people still incline to choose others as deity or deities to establish the basics of their life unlike the automated beings. Therefore, while the idea about the existence of the unique creator stayed constant, deified objects or people are kept changing according to the time and place, where human beings lived. Certain objects like sun, earth, eagles, goats, bulls etc. or people as leaders were idolized voluntarily or involuntarily by means of force. However, they, willingly or unwillingly, submitted themselves fully at the service of the chosen or imposed deity or deities to regulate their everyday life related emotional actions that clearly reflect on self and society.

For example, the sun and the earth were considered holy at first after the ice age but never worshipped; but somehow, praising and thanks giving ceremonies turned into worshipping rituals later on. Hammurabi, (1792-1750 BC)² was the king of Babylon who established the first written social rules and regulation but there is no evidence that he was taken as a deity. However, there are plenty of historical evidences that Pharaohs openly declared themselves as deities with full authority to impose obedience for a long period of time from around 3100 to 332 BC.³ They enforced their unauthentic rules and regulations on people, which did not create harmony between individuals, cultures and social classes let alone fulfilling the need of finely tuned harmony between all beings, including spirit and soul. Humans always search for a deity or deities that offer the best life order but, unfortunately, with the worst understanding in the meaning of the word '*deity*' itself. This confusion becomes more visible at the time of mythology with the concept of fantasized, invisible, countless deities. Self-imagined endless deity stories were used as the source of knowledge and authority to identify self and customise cultures that motivate emotions and actions.

Philosophy, on the other hand, placed the human rational intellect right in the centre of the consciousness and demand that it has to think, learn, decide and act for the sake self, self-alone. This, on the one hand, gave individuals the opportunity to think for themselves, which was badly lacking at the time but the authentication and unification of knowledge was totally ignored on the other. Therefore, individualism reached its highest point, creating so many different philosophically speculated approaches and methods such as realism, idealism, mysticism and scepticism and so on that there was almost no consensus.⁴ Consequently, human beings, matters, objects, animals, myths, magic, dreams and even certain ornaments and products of human imaginations became a deity or deities and lives were ruled and regulated under the name of these deities, when in fact, they were nothing but the product of bare human thoughts and imaginations.

No matter how wise the human conscious intellect is, unauthenticated brainpower alone cannot provide valid codes and coordinates for ordinary everyday life, let alone to meet the need of all the different dimensions required to have perfect integration with all to function in perfect harmony. Individuals can be at opposing extremes and would never ever be able to meet at any point. For example, Diogenes Laertius (400-325 BC) who consciously choose to give up reasoning altogether and lived like an animal on the streets and Pyrrho of Elis (365-275BC) who on the other hand, searched for

² Robert A. Guiseppi & F. Roy Williams, The Akkadians: World History Project. http://history-world.org/sargon_the_great.htm

³ Wim van den Dugen, King Unas corridors, West Wall (313-317) & East Wall (230-319). <http://www.sofiatopia.org/maat/wenis13.htm>

⁴ Windelband, Wilhelm (2006). A History of Philosophers, Trans. by James H. Tufts.

nothing but reason and reason alone in everything.⁵ In these cases, the outcome would always be bias and will cause emotional chaos in individuals that naturally will reflect on to the self and the society.

In the mean time, first messages in all the revelations directly concentrate on the choice of deity to lay clear and strong foundation for building the basic principles to meet individual and universal needs. The first commandment in the Ten Commandments states: 'I am the Lord (Rab) your God (Creator) who brought you out of Egypt, out of land of slavery. You shall have no other gods (deities) before Me.'⁶ The New Testament declares the same, 'Jesus said to him, "Away from me, Satan! For it is written: Worship the Lord your God (Deity) and serve Him only."⁷ And, the Qur'an says, 'Your deity is one and only; there is no other deity (Ilah) but Allah, Who has the boundless mercy for special and the entire.'⁸ Evidently, all the revelations indicate the necessity of a single fixed goal in life by choosing the single deity right from the beginning to be able to have a safe journey, which is based on emotionally wavering behaviours. They all emphasise that when knowledge from the higher intellect is recognized and authenticated by science then the emotions can be motivated to maximum perfection for the healthiest and happiest life ever.

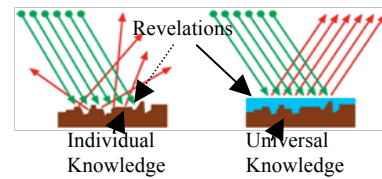


Figure 2: Diffuse and Specular Reflections of Revealed Knowledge.

Human beings are parts of a unit with similar strength and weaknesses that only vary according to genetic, physical, cultural, religious and environmental backgrounds. In fact, some of the social differences are almost disappearing with easily accessible networking services in 21st century.

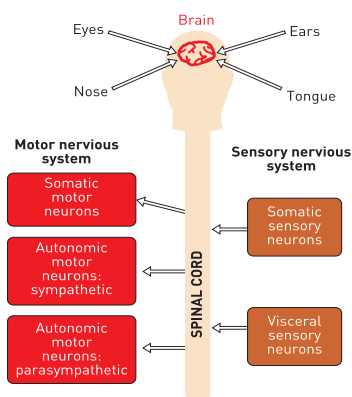


Figure 3: Central Nervous System.

Whether this overpowering networks system that motivates emotions and behaviours can be defined as deity or not remain to be studied. Nonetheless, this ultra fast and vast change in the world's life order is not only mesmerizing individual values but also creating confusion in cultural and universal norms. It almost resembles the chaos stage of the universe at the beginning. While the gaps of unknown are closing on one side, more unknown gaps are being created on the other. This highly unsteady situation can cause excessive disturbance in human perception, psychology and behaviour that naturally reflects on every aspect of life including biology. It is well known that humans are the products of sophisticated structure in which spirit, soul and matter, (earth, water, air and heat) are interwoven tightly together and work under a combined authority of an autonomous and a voluntary nervous system.

Therefore, it is necessary to have precise codes and coordination to enable them to work in total harmony. However, the energy produced by the conscious voluntary system has some ability to distort or override the energy produced by the autonomous system when the authentic correlations and coordination fail between them. Since the sense organs '...Contains receptors that response selectively to specific type of energy, the eyes respond to light energy and ears responds to sound energy...Energy that is received from outside of the body is converted into electrical signals that can

⁵ Russell, Bertrand (1993). History of Western Philosophy.
⁶ The Holly Bible, New International Version, Exodus 20:1.
⁷ The Holly Bible, New International Version, Matthew 4:10.
⁸ Abdullah Yusuf Ali, (1983). The Holy Qur'an, Bakara: 2:163.

be processed by the nervous system. An appropriate response is generated mainly by controlling the activity of cells in the other organs or tissues that bring action outside the nervous system. These cells are known as effectors.⁹

The human '...nervous system contains at least 300 billion cells in total.'¹⁰ They work in chain reaction, cause and effect, repetitive intervals. 'Cells are delineated by an outer membrane which separates them from the external environment... nucleus contains deoxyribonucleic acid (DNA)...There are additional structures... necessary for the biological processes of cellular life, such as making protein or transforming nutrients into utilizable energy source.'¹¹ Therefore, the level of perception energy input will directly affect the level of energy release within the synapses. The released neurotransmitters have to be in balance with the capacity of the receptors intake. In the case where more are released than can be taken in by the receptors, the left out neurotransmitters can go and disturb or damage the weakest point of the body. In the case of releasing less than the capacity of intake, nerves can get stiff and die over time due to lack of energy flow. Moreover, a sudden shocking energy release into the system, which is more than the body can deal with can seriously damage or kill a person instantly.

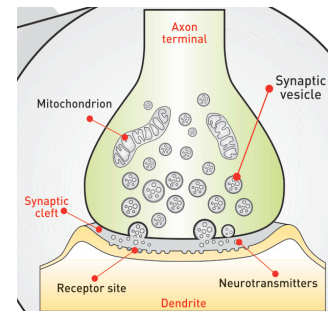


Figure 4: Synapses.

Evidently, human beings need to motivate their emotions in the most authentic manner as much as possible to be able to achieve the perfect biological synaptic flow within the body for the sake of healthy neuropsychology and social structure combination, which are closely interwoven altogether.

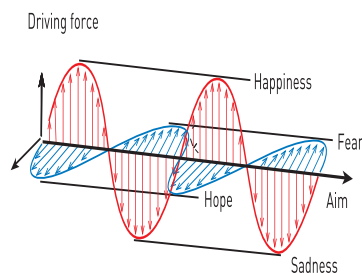


Figure 5: Basic Emotion Waves.

When we look back into the human history we can clearly see that emotions such as happiness, sadness, hope and fear are always used for motivating self-behaviours or manipulating behaviour of others to establish some kind of life order. Unfortunately, the people who attempt to motivate self, the people who manipulate others and the people who are willingly or unwillingly following the unauthenticated methods to motivate emotions are, in fact, doing nothing but damaging and destroying the self and the surroundings that they themselves are living in.

Unauthenticated choice of deity can also create fear and anxiety among human beings due to unjust, incorrect pressure applied while dealing with each other. Therefore, when the equal or non-equal creation or creations with similar natures are chosen as a deity or deities will create serious biological, psychological and social disorders not only in the choosers but also in the chosen. Meanwhile, feelings of indebtedness, revenge, favour and fear that are considered to be coming from another similar creations put the natural energy flow between the different mediums under a tremendous pressure, which can create chaos, even jeopardise emotional motivations altogether. Therefore, an authenticated unique deity has to be chosen to have a genuine fixed end that has a valid equilibrium line to keep the wavering emotions under control through

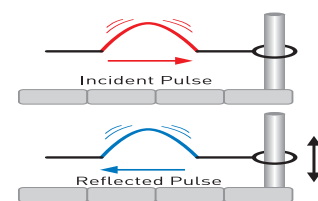


Figure 6: Free end Wave Behaviour.

⁹ Open University Book 1, Level 2, (2007). From Cell to Consciousness, p: 43.

¹⁰ Open University, From Cell to Consciousness, p: 65.

¹¹ Open University, From Cell to Consciousness, p: 58-59.

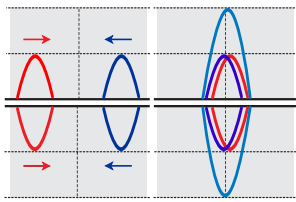


Figure 7: Positive and Negative Wave Interferences Before and During.

the rough ride of life, equally free and just for all. Now, we can look into 'four types of energy wave end boundary behaviours' to explain the authentic choice of deity scientifically.¹²

It is obvious that here is no human being who exists without a deity or deities to turn to, either for thanking or seeking help to motivate or satisfy their emotional feelings. The people who claim that they do not have any deity and the people who have deity but are caught unguarded with a sudden emotional energy overflow are the same and represented here with 'free end wave boundary behaviour'. Both 'constructive' (+) and destructive (-) waves in the free end wave boundary behaviour can become the most destructive waves on the nervous and social systems. Once an unguarded positive 'happiness' or negative 'sadness' input energy signal enter through the senses, it reflects back with double strength, the higher the value of input, the stronger the reflected pulse will be. '...The restoring force (power that works against the wave) is zero and the reflected (soft) wave has the same polarity...'¹³ When a reflected pulse meets with the incoming incident pulse from the opposite direction on the same side of the medium, both values will be added up together but as soon as the waves pass each other, each will carry their own original values, and the sequence will carry on until reaching the destination. If it reaches the nerves in the brain when it is in its highest point, it can distort or jam the nervous system completely, depending on the intensity of it. This indicates that, when the waves are intensified on the same side of the medium they are more likely to cause serious psychological, biological and social damage, even become lethal at times, killing or to be killed. For example, Eymen, a Syrian girl ran to Turkey from the war in 2013 and met a Turkish boy; they fell in love and married. Later on, her brother whom she had not seen for a long time came and wanted to surprise her. Unfortunately, his sudden appearance shocked Eymen's nervous system and she died there and then.¹⁴

Unlike the free wave end boundary behaviour some energy transmission can take place between the emotional voluntary actions and the pre-programmed intellect depending on the ratio of the density difference between them. In the case of choosing a deity that has a 'less dense medium' than the nature of human beings, the transmitted pulse will carry some values away from the incident pulse, but leave some behind to be carried back by the reflected pulse, which is on the same side of the medium, constructive or destructive, with some value that depends on the ratio between them both. The value of the reflected pulse and the incoming incident pulse will add up when they meet, however, they will carry on with their own values after passing through each other. Whether, positive or negative the reflected value will always be more than the value of first released when it reached back to the system.

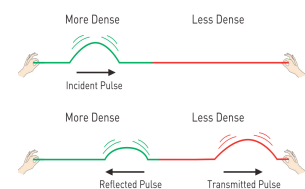


Figure 8: A wave Travelling from a More Dense to a Less Dense Medium.

In the case of choosing a deity that has 'denser medium' than human being, it works in a similar way but the reflected pulse becomes an inverted pulse after transmitting some of its value to the denser medium and the transmitted amount depends on their density ratio difference in between. This time,

¹² Karatas, S. Deity and Freedom Equality Justice in History Philosophy Science.

¹³ Russell, Daniel A. 'Reflection of Waves from Boundaries, Free end', Last modified 18 March 2013, Viewed 25 December 2013, <http://www.acs.psu.edu/drussell/Demos/reflect/reflect.html>

¹⁴ Milliyet.com.tr, 'Surprise visit brought death', Posted 24 December 2013, viewed 24 December 2013, <http://www.milliyet.com.tr/surpriz-ziyaret-olum%20getirdi/gundem/detay/1812317/default.htm?ShowPageSkin=1>

the value of the reflected and the incident pulse will be reduced when they meet but still carry on their own original values after passing through each other. However, in both cases whatever or whoever the chosen deity is, there will be some extra energy left over to influence and effect the nervous system one way or the other, never allowing a totally neutralization to take place. This means that valid energy communication between the pre-programmed and the conscious voluntary systems is not achieved accurately. The amount of interaction that takes place demonstrates the ability and the level of coordination that is shared between them automatically. Inaccurate emotional energy transmissions at synapses with either low or high-energy flow will, if not suddenly, slowly and gradually damage biological, psychological and social bodies altogether.¹⁵

Ultimately, the chosen deity and the chooser both have to have validated capacity and complete coordination ability for the 'fixed end boundary behaviour' to take place. This is in fact only possible when the Creator is on one end, the only being who has corroborated capacity as the originator of the energy itself that none of the existing energy can go beyond, and the human beings, on the other end. However, the fixed point in human beings is highly debated, some scholars say it is the 'mind'¹⁶ and some others say that it is the 'heart',¹⁷ indicating that the heart has the capacity of believing and reasoning as well as combining them both. It has the ability to go beyond the reason and believe in the existence of the Creating power without seeing, hearing, touching or having any figure in mind, which is one of the qualities of being the deity. The heart is the only organ that has the ability to receive the incoming primary source that is coming directly from the deity and the secondary sources that are shared through energy network between the creations. The senses are used to evaluate energy input depending on varied individuals as well as unified universal reasoning but the heart is used to receive the primary and secondary energy inputs and redirect the received energy signals back to the primary and secondary sources consciously and voluntarily. However, the nervous system can only be neutralized totally if the communication between the different energy medium is genuine.

Unlike the other wave ends behaviours the total balance of neutralization on the same medium can take place only with the fixed end boundary behaviour: '...Since the end is clamped, it cannot move...According to Newton's third law, the wall (end) must be exerting an equal downward force on the end of string. This new force creates a wave pulse that propagates from right to left with the same speed of the incident wave, but in opposite polarity... at the fixed (hard) boundary, the displacement remains zero...'¹⁸ The power of the reflected wave stays at the same value of the incident wave but

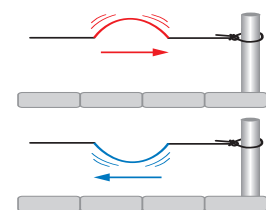


Figure 10: Fixed end Wave Boundary

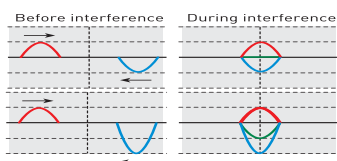


Image11: Positive and Negative Wave Interferences of Fixed End Boundary Behaviour.

is of an opposite value, turning into negative position, completely opposite to the free end wave behaviour. When both pulses with the same value meet on the same medium, they can neutralize each other totally. When the value of the reflected pulse is higher than the incoming incident pulse, the value of the reflected pulse will be reduced from the value of the incident pulse. Thus the returning energy levels never become higher than that realised in the first place.

¹⁵ Karatas, S. (2013). Deity and Freedom Equality Justice in History Philosophy Science.

¹⁶ Russell, Bertrand, History of Western Philosophy, p: 151.

¹⁷ Watt, W. Montgomery (1994). Trans. The Faith and Practice of Al-Ghazali, p: 74.

¹⁸ Russell, Daniel A. 'Reflection of Waves from Boundaries, Fixed end'
<http://www.acs.psu.edu/drussell/Demos/reflect/reflect.html>

Therefore, choosing the actual energy source as the only Deity facilitates all pre-programmed, emotional and conscious voluntary actions to work together in the most perfect harmonious coordination. When the total neutralization is achieved between the two fixed ends on the same equilibrium, time and space can disappear and the unification of the source and the receiver can take place. Although '...human beings are 'by nature equal' in both body and intellect are tragically distorted by our first-person perspective...'¹⁹ Human beings have combined bodies of different beings and it may be too complicated and impossible to achieve a hundred per cent correlation between the two fixed ends. However, it seems to be the best system that works in the most perfect and the least disturbed manner, leaving not only the human beings but also all the rest of the creations to work in harmony free, equal and just.

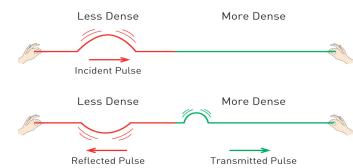


Image 9: A wave travelling from a Less dense to a Denser Medium.

One can clearly understand by now that the deity, either chosen from within self, such as ego, knowledge, self-strength, or from outer self, such as position, power, wealth, family heritage, or any other things that are made of matter or imagination are all created beings. They have varied or similar energy levels between them equal, lower or higher but will never meet the need of the other fully in an authentic manner to be the deity. They are all dependents of each other nourished by the same energy source and governed by the same higher intellect. High or low medium wave end boundary behaviours demonstrate that they have certain levels of interaction ability between them. However, none is independent of the other, nor can one have total authority above the other. Choosing the same Deity voluntarily that the non-conscious beings automatically submit to while they are doing their works is vital to maintain the existing essential harmony. Thus, the full responsibility is given to every conscious individual within total freedom equality and justice to motivate their own self-emotions according to every individual variation as well as universally common social relations.

In fact, fixed end boundary behaviour demonstrates that human psychology, biology, sociology has no exemption and that they need to work in harmony within self, with others and with the source of origin, the Deity. Therefore, the scientific approach for choosing authentic deity could be the key to depressions and depression related illnesses that are directly linked to the unsteady emotional behaviours. Effects of the energy interaction behaviour between human beings and the chosen deity or deities need unbiased scientific study research centres and methods to develop to meet the need of the 21st century and beyond. Besides, there is further question to be asked and searched that most probably answering could take many more centuries to come. Such as, 'Could there be a direct link between the human consciousness and the Creator other than the Big Bang?' And, 'If there is how could it be discovered and studied scientifically?'

¹⁹ Gross, Daniel M. (2006). The Secret History of Emotions 'From Aristotle's Rhetoric To Modern Brain Science. p: 45-23.

References

- Ali, A. Yusuf, (1983). *The Holy Qur'an*. 4411 41 St. Brentwood Maryland 20722TWX901153 USA WASH.
- Barrow, John D. (1994). *The Origin of the Universe*. The Orion Publishing group:
5 Upper Saint Martin's Line London WC2H 9EA.
- Crump, T. (2002). *A Brief History of Science –as seen through the development of scientific inst.* Constable & Robinson Ltd. 3 The Lanch.162 Fulham Place Rd. London W6 9ER.
- Greene, B. (2000). *The Elegant Universe*. Vintage, Random House, 20 Vauxhall Bridge Road London SW1V 2SA.
- Gross, D. M. (2006). *The Secret History of Emotions 'From Aristotle's Rhetoric To Modern Brain Science*. By The University of Chicago Press Limited London ISBN: 13:978-0-226-30980-4.
- Holly Bible* (1987). *New International Version*: British Library Cataloguing in Publication data. The Holy Bible 1. Bible 220.5'2 BS195.157.
- Karatas, Sukran. (2013). *Deity in History Philosophy Science*. Shukran Publishing Company Press Turkey.
- Open University Book 1*, (2007). From Cell to Consciousness. Walton Hall, Milton Keynes MK7 6AA ISBN: 978 0 7492 1430 2.
- Russell, B. (1993). *History of Western Philosophy*. By Rourledge 11 New Fetter Line, London EC4P 4EE ISBN: 0-415-07854-7.
- Watt, W. Montgomery, Trans. (1994). *The Faith and Practice of Al-Ghazali*. By Oneworld Publishers 185 Banbury Road Oxford OX2 7AR UK ISBN: 1-85168-062-4.
- Windelband, W. (2006). *A History of Philosophers*, Translated by James H. Tufts, Ph.D. (First pub.1893) Elibron Classics by Adamant Media Corporation ISBN: 0-543-96374-8.
<http://www.sofiatopia.org/maat/wenis13.htm>
- Web Sites:**
- Daniel A. R. (2013). Reflection of Waves from Boundaries. Last modified 18 March 2013.
<http://www.acs.psu.edu/drussell/Demos/reflect/reflect.html>
- Milliyet.com.tr, 'Surprise visit brought death', Posted 24 December 2013.
<http://www.milliyet.com.tr/surpriz-ziyaret-olum%20getirdi/gundem/detay/1812317/default.htm?ShowPageSkin=1>
- Wim van den Dugen, 'King Unas corridors, West Wall (313-317) and East Wall (230-319)'.
<http://maat.sofiatopia.org/wenis13.htm>
- Robert A. Guiseppi & F. Roy Williams, 'The Akkadians', World History Project, last modified January 2007.
http://history-world.org/sargon_the_great.htm

Figures:

© Copy right holder: Sukran Karatas, Turkey: 'Shukran Publishing Company'

Sukran Karatas is a social science freelance researcher. Her main interest is to combine faith and science together to make knowledge alive for the benefit of human health and happiness. She wrote a book called '*Deity in History Philosophy Science.*' Sukran is determined to see new combined scientific research methods and solutions are developed for social sciences in the future.